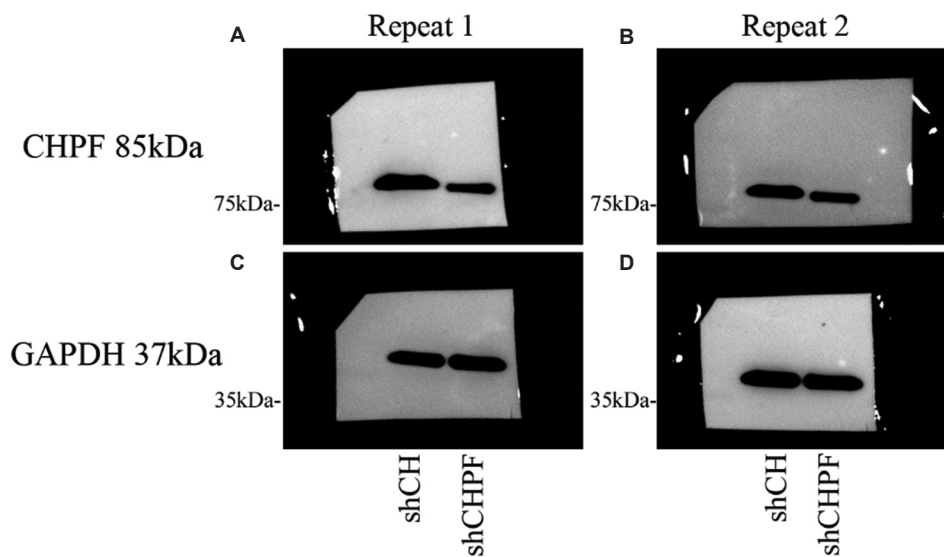


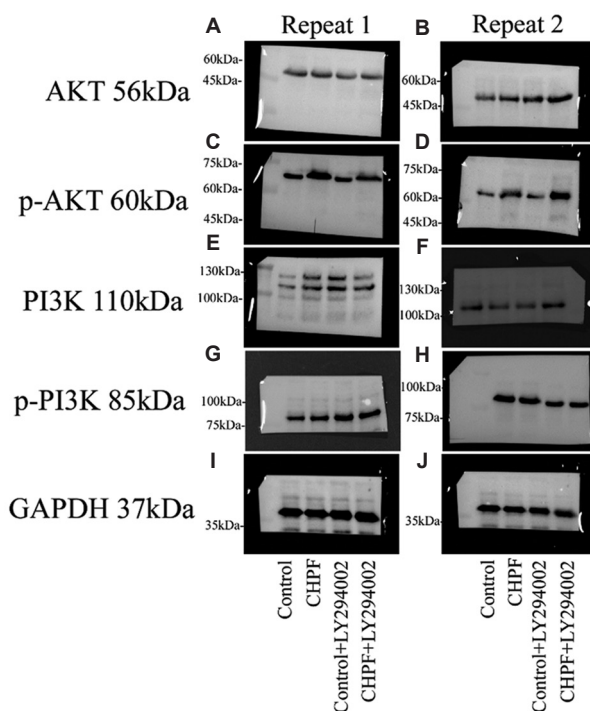
ORIGINAL RESEARCH ARTICLE

Targeted inhibition of chondroitin polymerizing factor suppresses CD5<sup>+</sup> diffuse large B-cell lymphoma progression through the PI3K/AKT signaling and RhoA/ROCK axis

Raw Image File

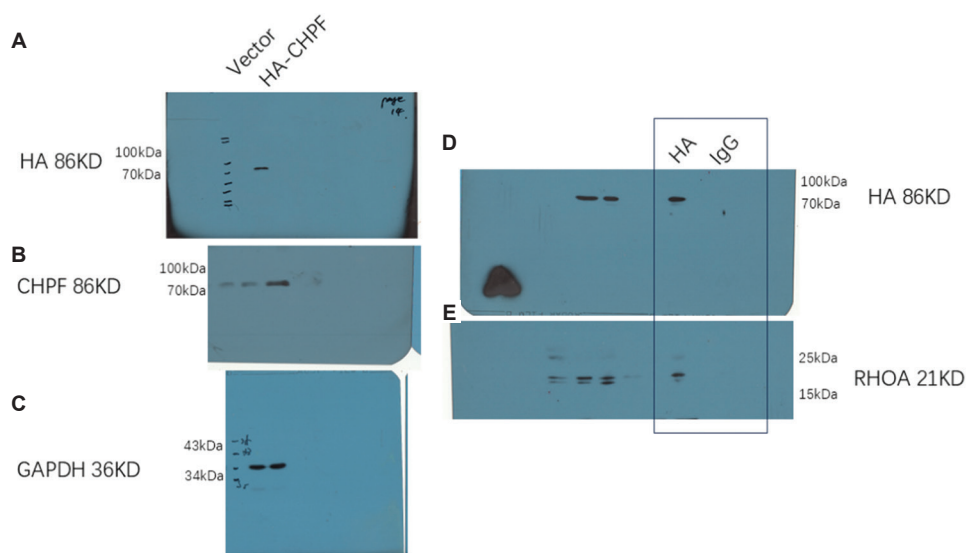


**Figure R1.** Original Western blot images for chondroitin polymerizing factor (CHPF) and glyceraldehyde 3-phosphate dehydrogenase (GAPDH) in Figure 2D. (A) Western blot for CHPF (85 kDa), Repeat 1. (B) Western blot for CHPF (85 kDa), Repeat 2. (C) Western blot for GAPDH (37 kDa), Repeat 1. (D) Western blot for GAPDH (37 kDa), Repeat 2.



**Figure R2.** Original Western blot images for AKT, p-AKT, PI3K, p-PI3K, and GAPDH shown in Figure 5B. (A) Western blot for AKT (56 kDa), Repeat 1. (B) Western blot for AKT (56 kDa), Repeat 2. (C) Western blot for p-AKT (60 kDa), Repeat 1. (D) Western blot for p-AKT (60 kDa), Repeat 2. (E) Western blot for PI3K (110 kDa), Repeat 1. (F) Western blot for PI3K (110 kDa), Repeat 2. (G) Western blot for p-PI3K (85 kDa), Repeat 1. (H) Western blot for p-PI3K (85 kDa), Repeat 2. (I) Western blot for GAPDH (37 kDa), Repeat 1. (J) Western blot for GAPDH (37 kDa), Repeat 2.

Abbreviations: AKT: Protein kinase B; GAPDH: Glyceraldehyde 3-phosphate dehydrogenase; PI3K: Phosphoinositide 3-kinase; p-AKT: Phosphorylated AKT; p-PI3K: Phosphorylated PI3K; RhoGDI: Rho GDP-dissociation inhibitor.



**Figure R3.** Original Western blot images for HA-tag, CHPF, GAPDH, and RhoA shown in Figure 5F. (A) Western blot for HA-tag (86 kDa) in 293T cells transfected with vector or HA-CHPF. (B) Western blot for CHPF (86 kDa) in 293T cells transfected with vector or HA-CHPF. (C) Western blot for GAPDH (36 kDa) in 293T cells transfected with vector or HA-CHPF. (D) Western blotting for HA-tag (86 kDa) in lysates immunoprecipitated with anti-HA or IgG. (E) Western blotting for RHOA (21 kDa) in lysates immunoprecipitated with anti-HA or IgG. Abbreviations: CHPF: Chondroitin polymerizing factor; GAPDH: Glyceraldehyde 3-phosphate dehydrogenase; HA: Hemagglutinin; IgG: Immunoglobulin G; RhoA: Ras homolog family member A.