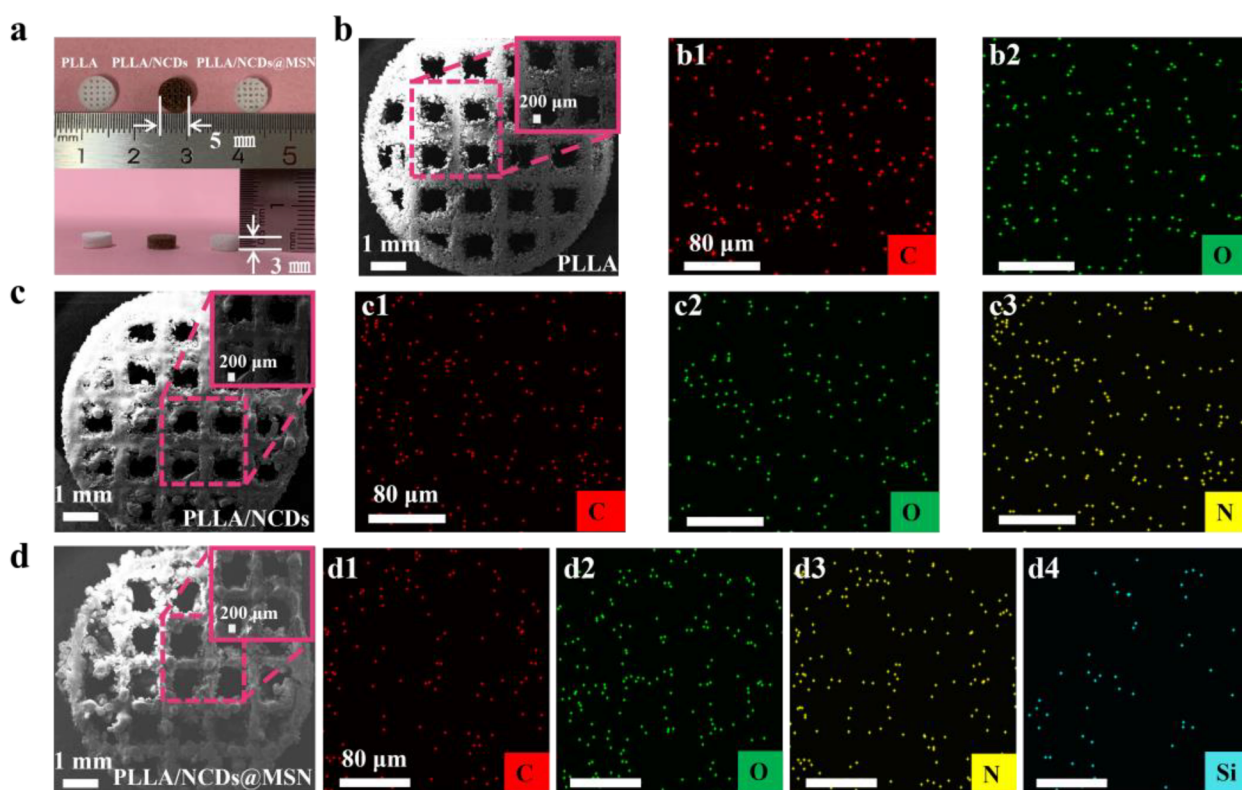


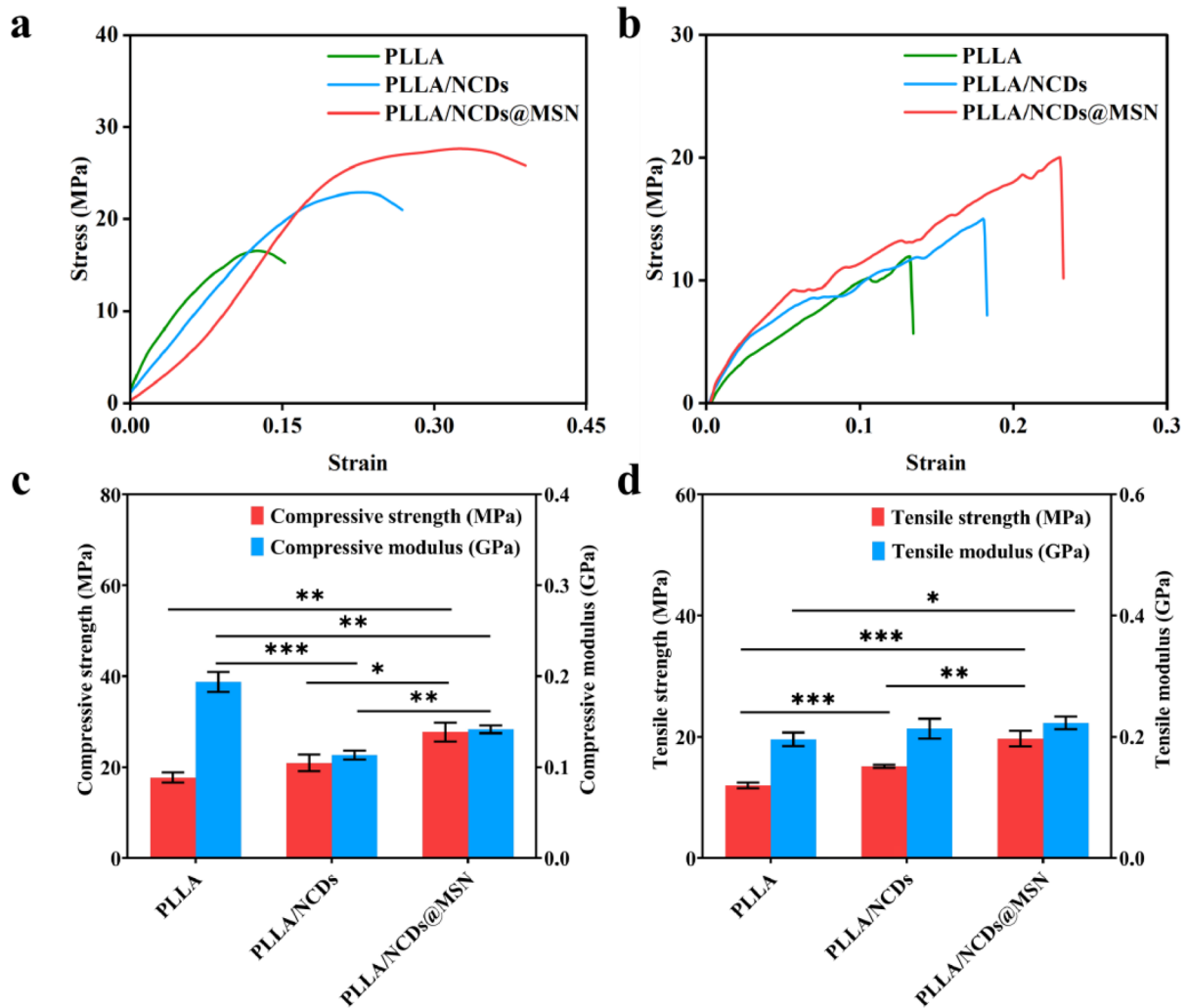
RESEARCH ARTICLE

Si–C covalent bonding-mediated interfacial charge transfer enhances photodynamic antitumor effects of selective laser sintered bone scaffolds

Supplementary File



**Figure S1.** Morphological and elemental characterization of the scaffolds. (a) Digital photograph of the scaffolds. Scanning electron microscopy images and energy-dispersive spectroscopy elemental mapping of (b) PLLA scaffold, (c) PLLA/NCDs scaffold, and (d) PLLA/NCDs@MSN scaffold. Scale bars: 1 mm, 200 μm, 80 μm; magnification: 33×, 100×, 33×.



**Figure S2.** Mechanical properties of the scaffolds. (a) Compressive and (b) tensile stress–strain curves of the scaffolds. (c) Compressive strength and compressive modulus of the scaffolds. (d) Tensile strength and tensile modulus of the scaffolds.