

RESEARCH ARTICLE

Hollow spherical mineralized scaffold integrated with a bone marrow mesenchymal stem cell-laden three-dimensional delivery system for regeneration of critical-sized bone defects

Supplementary Files

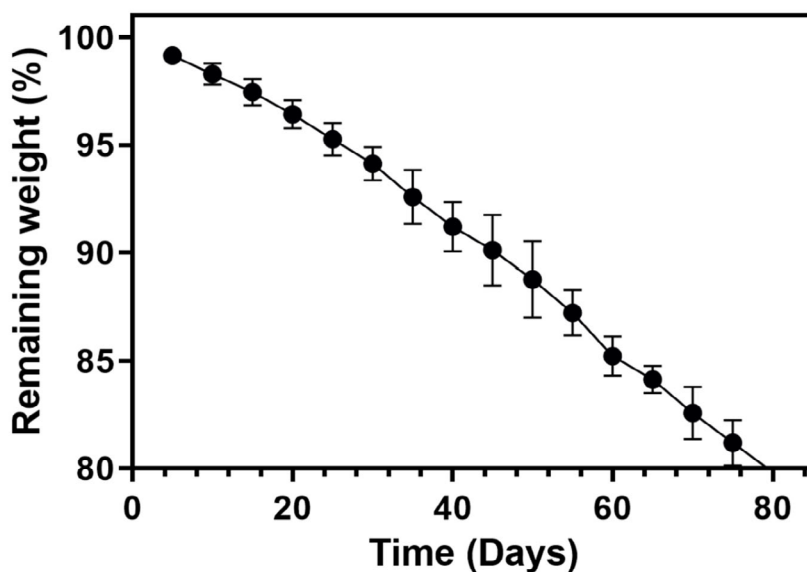


Figure S1. Characterization analysis. The biodegradation rate of the scaffold was evaluated in phosphate-buffered saline (PBS: 37 °C, pH = 7.4).

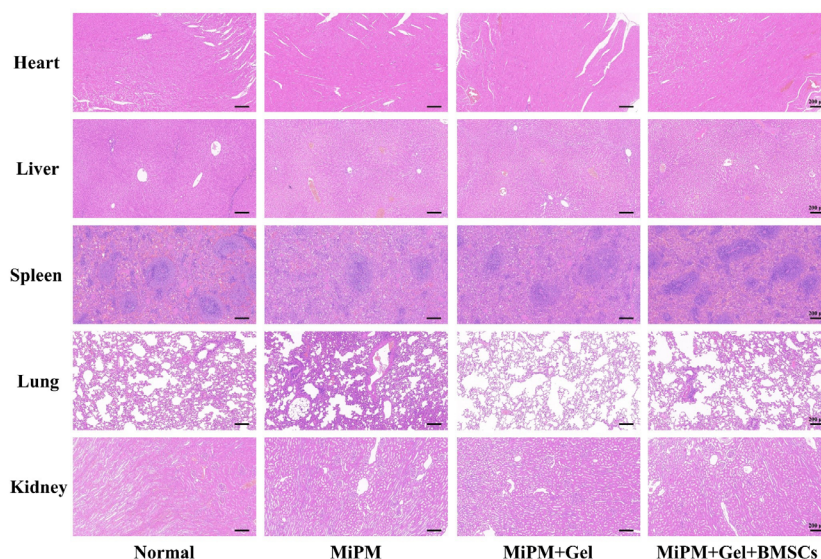


Figure S2. *In vivo* histological evaluation. Hematoxylin and eosin staining of major organs (heart, liver, spleen, lungs, and kidneys) harvested from rabbits 12 weeks after receiving different scaffold treatments for critical-sized bone defects. Scale bars: 200 μ m; magnification: 5 \times .