

ORIGINAL RESEARCH ARTICLE

Hyporesponsiveness to pathogen stimulation in CD56⁺ natural killer cells and CD8⁺ T cells from patients with primary sclerosing cholangitis

Supplementary Files

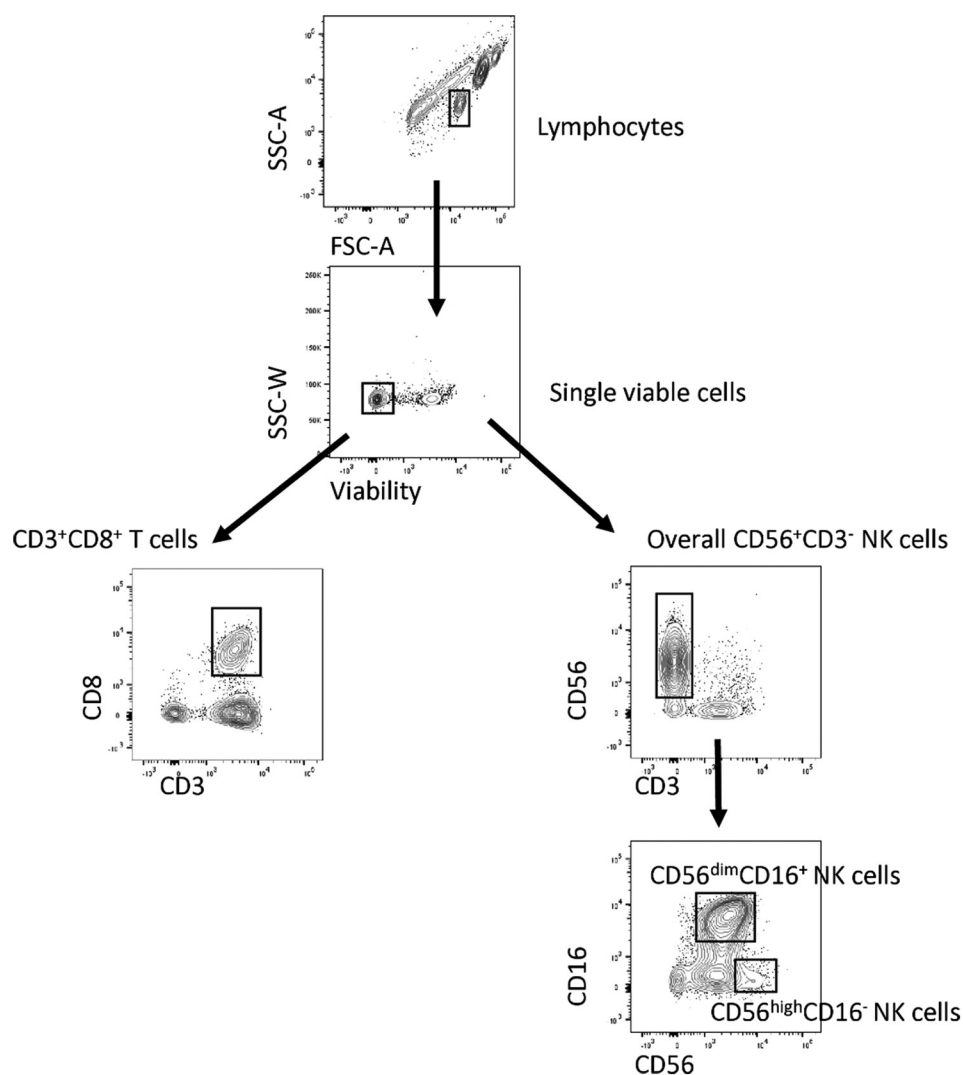


Figure S1. Flow cytometric gating strategy defining viable CD8⁺ T cells and NK cells in humans. This figure illustrates a representative gating analysis of overall CD56⁺CD3⁻ NK cells and CD8⁺ T cells as single cells. Afterward, NK cells were gated into CD56^{dim}CD16⁺ and CD56^{high}CD16⁻ NK cell subsets. Abbreviations: CD: Cluster of differentiation; FSC-A: Forward scatter-area; NK: Natural killer; SSC-A: Side scatter-area; SSC-W: Side scatter-width.

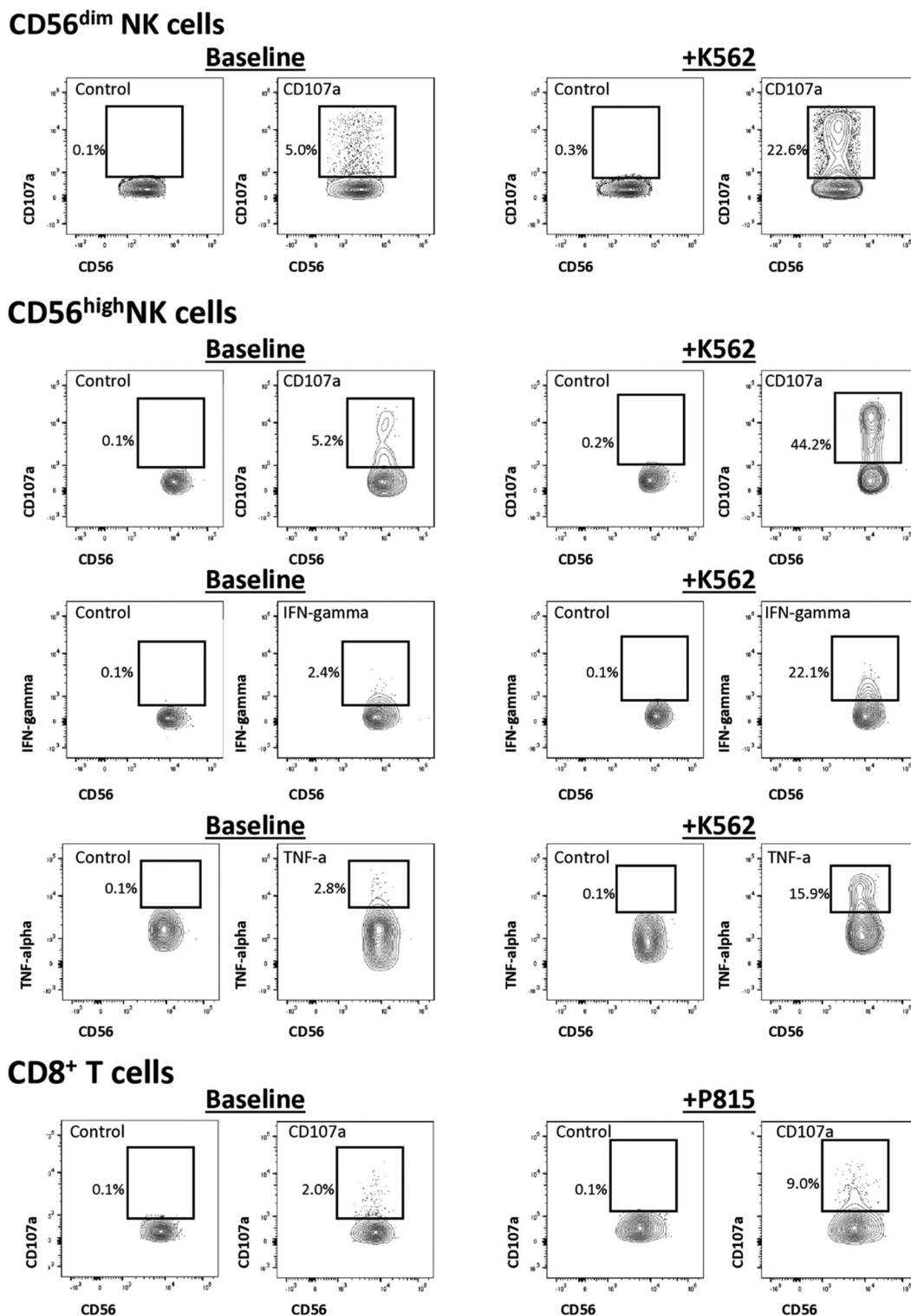


Figure S2. Flow cytometric gating strategy detecting frequencies of CD107a⁺, IFN-gamma⁺, and TNF-alpha⁺ NK-cell subsets and CD8⁺ T cells. This figure illustrates representative dot plots of CD107a⁺ cells in CD56^{dim} NK cells, CD56^{high} NK cells, and CD8⁺ T cells at baseline versus stimulation with target cells. Furthermore, the figure shows representative frequencies of IFN-gamma⁺ and TNF-alpha⁺ cells in CD56^{high} NK cells. Fluorescence-minus-one controls were used to define gating boundaries.

Abbreviations: CD: Cluster of differentiation; IFN: Interferon; NK: Natural killer; TNF: Tumor necrosis factor.