

COMMUNICATION

Ea₅Mab-7, a novel anti-EphA5 monoclonal antibody for flow cytometric and immunohistochemical applications

Supplementary File

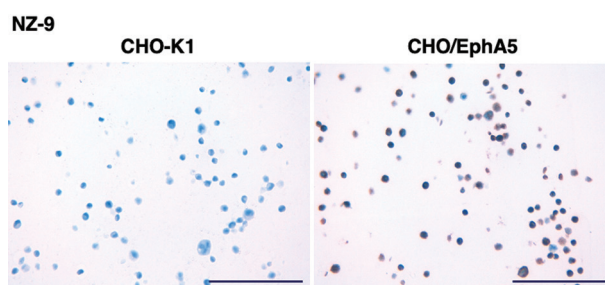


Figure S1. Immunohistochemical staining of paraffin-embedded CHO/EphA5 and parental CHO-K1 sections. The sections of CHO/EphA5 and parental CHO-K1 cells were treated with an anti-PA16 tag mAb (clone NZ-9, 1 µg/mL). The staining was performed using BenchMark ULTRA PLUS with the OptiView DAB IHC Detection Kit. Scale bar: 100 µm; magnification: 400×.

Table S1. Amino acid sequence of complementarity -determining regions (CDRs) of Ea₅Mab-7. The cDNAs of Ea₅Mab-7 variable regions were cloned, and the amino acid sequences of CDRs were determined. Ea₅Mab-7H denotes the heavy-chain of Ea₅Mab-7, and Ea₅Mab-7L denotes the light-chain of Ea₅Mab-7

Variant	Amino acid sequence
Ea ₅ Mab-7H	
CDR-H1	TYNMD
CDR-H2	YIDPYNGGTNYNQKFKG
CDR-H3	PYYYGYDGSYFDY
Ea ₅ Mab-7L	
CDR-L1	KASQNVGTAVA
CDR-L2	SASDRYT
CDR-L3	HQYGSYPYT