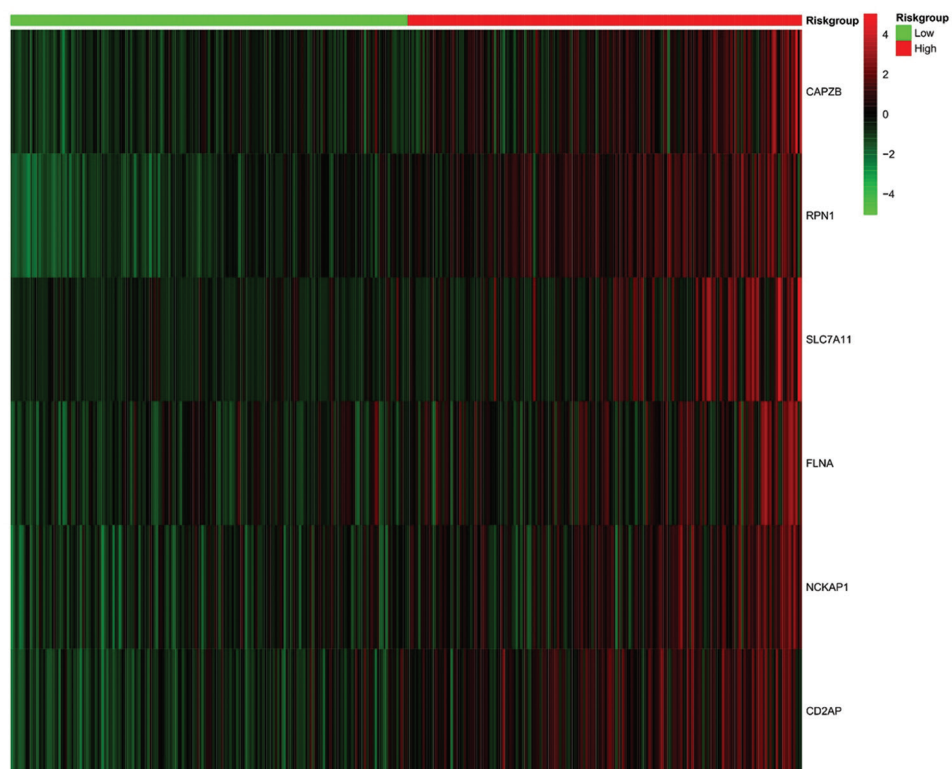


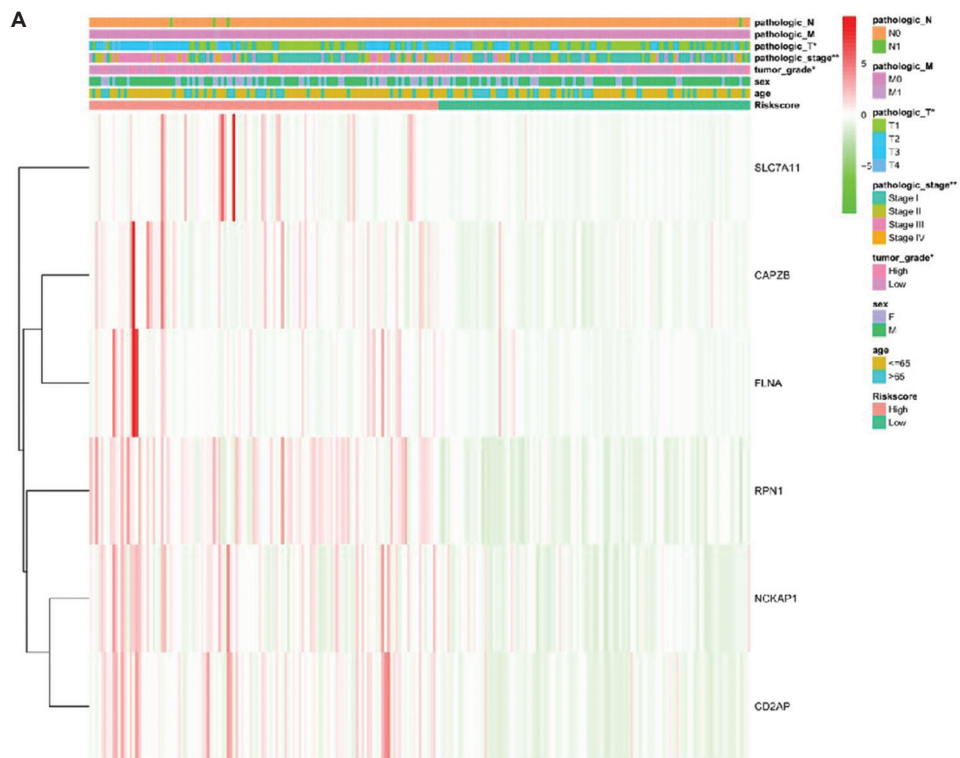
ORIGINAL RESEARCH ARTICLE

The role of disulfidptosis-related genes in the clinical prognosis and immune status of hepatocellular carcinoma

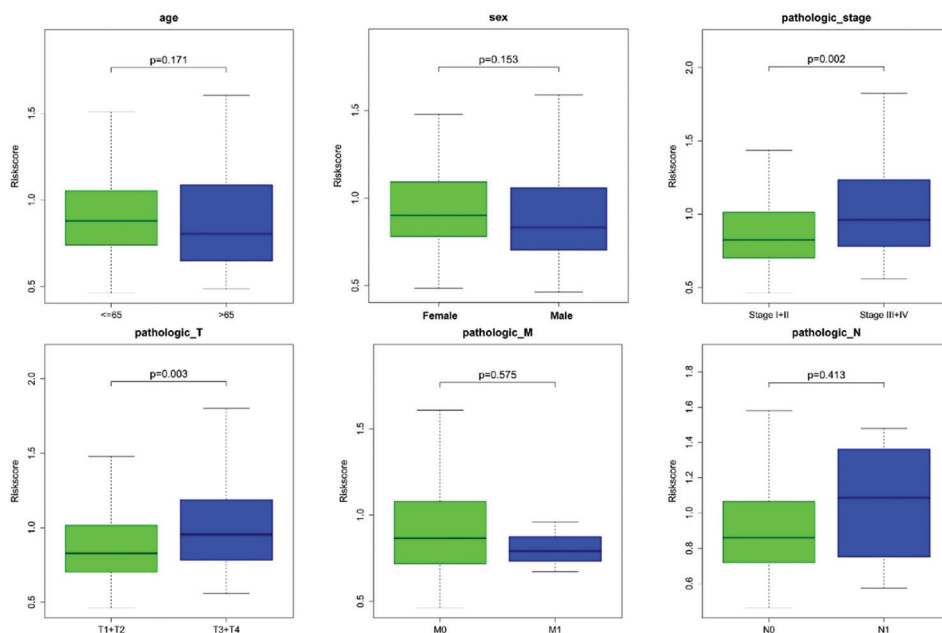
Supplementary File



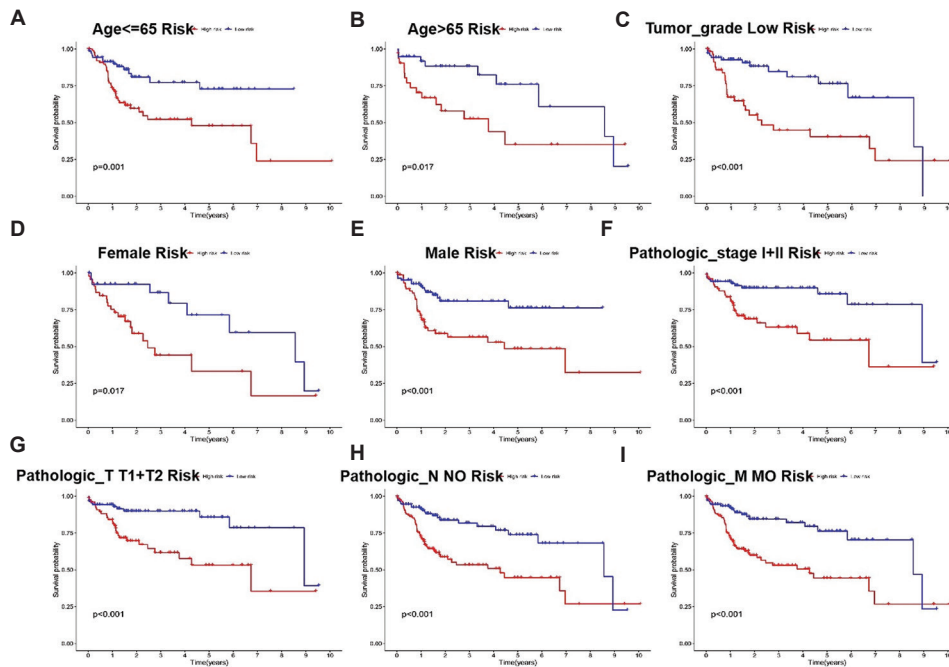
**Figure S1.** Heatmap of differences in disulfidptosis-related gene expression between the high-risk group and low-risk group. Low refers to the low-risk group, and high refers to the high-risk group. Red indicates high expression, and green indicates low expression.



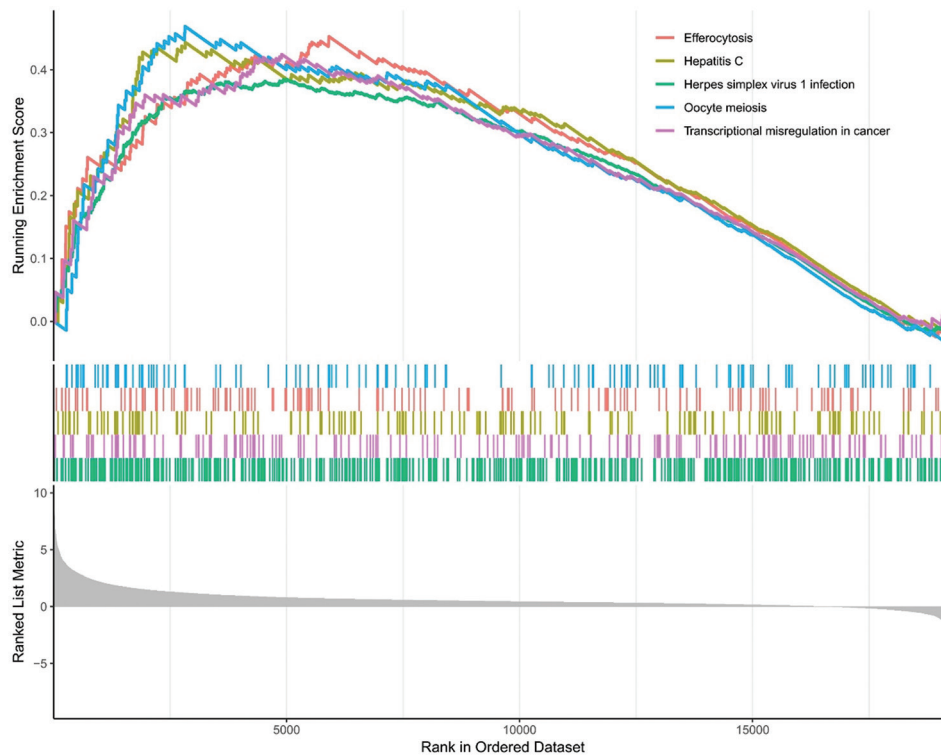
**Figure S2.** Heatmap of the relationship between the expression levels of the six disulfidptosis-related genes and clinicopathological factors. Each small square represents the gene expression level in patients with different clinicopathological characteristics. The color intensity reflects gene expression; higher expression (corresponding to the gene at the end of the horizontal line) is indicated by a redder color, while lower expression is represented by a greener color. Pathologic T, N, and M refer to tumor, node, and metastasis, respectively.



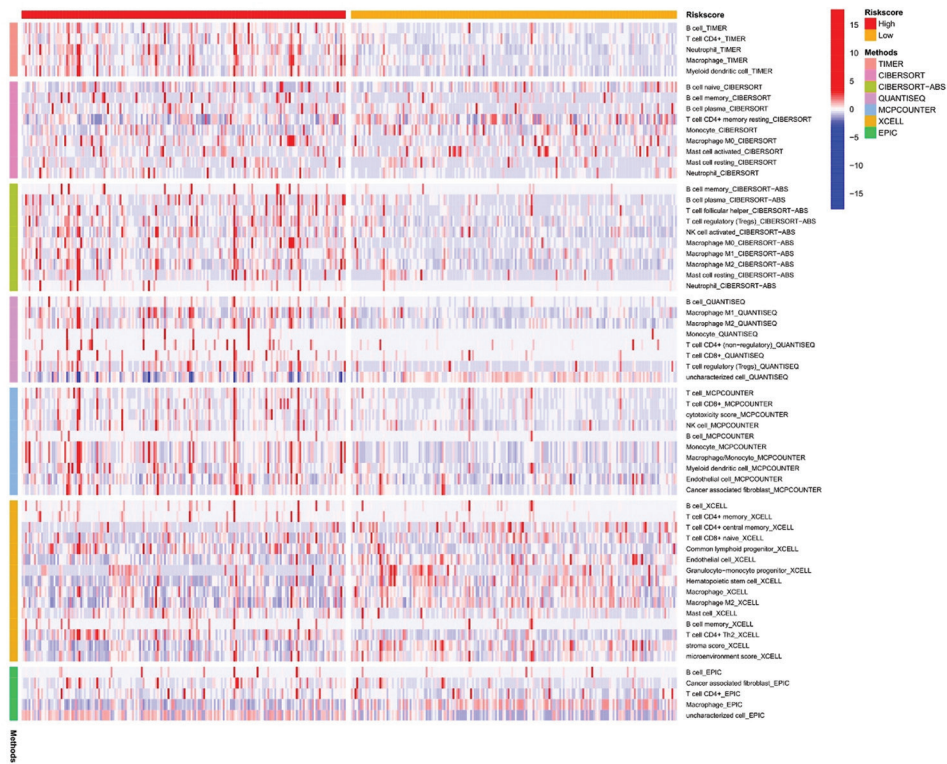
**Figure S3.** Boxplot of clinical factor variability analysis based on risk scores. Pathologic T, N, and M refer to tumor, node, and metastasis, respectively.



**Figure S4.** Kaplan-Meier curves of overall survival differences stratified by different clinical factors between the high-risk and low-risk groups, including (A) age  $\leq 65$ , (B) age  $> 65$ , (C) tumor grade (low), (D) female, (E) male, (F) pathologic stage (I–II), (G) pathologic T (T1 + T2), (H) pathologic N (N0), and (I) pathologic M (M0). Pathologic T, N, and M refer to tumor, node, and metastasis, respectively.



**Figure S5.** Gene set enrichment analysis



**Figure S6.** Correlation heatmap of immune cell infiltration. Each column represents a sample, and each row represents an immune cell (using different algorithms). High refers to the high-risk group, while low refers to the low-risk group. Red indicates high expression, and blue indicates low expression.